

Windows USB Driver(Q) NDIS Installation Guide

Version: 2.4

Date: 2024-04-30

Status: Released



At Quectel, our aim is to provide timely and comprehensive services to our customers. If you require any assistance, please contact our headquarters:

Quectel Wireless Solutions Co., Ltd.

Building 5, Shanghai Business Park Phase III (Area B), No.1016 Tianlin Road, Minhang District, Shanghai 200233, China

Tel: +86 21 5108 6236

Email: info@quectel.com

Or our local offices. For more information, please visit:

<http://www.quectel.com/support/sales.htm>.

For technical support, or to report documentation errors, please visit:

<http://www.quectel.com/support/technical.htm>.

Or email us at: support@quectel.com.

Legal Notices

We offer information as a service to you. The provided information is based on your requirements and we make every effort to ensure its quality. You agree that you are responsible for using independent analysis and evaluation in designing intended products, and we provide reference designs for illustrative purposes only. Before using any hardware, software or service guided by this document, please read this notice carefully. Even though we employ commercially reasonable efforts to provide the best possible experience, you hereby acknowledge and agree that this document and related services hereunder are provided to you on an “as available” basis. We may revise or restate this document from time to time at our sole discretion without any prior notice to you.

Use and Disclosure Restrictions

License Agreements

Documents and information provided by us shall be kept confidential, unless specific permission is granted. They shall not be accessed or used for any purpose except as expressly provided herein.

Copyright

Our and third-party products hereunder may contain copyrighted material. Such copyrighted material shall not be copied, reproduced, distributed, merged, published, translated, or modified without prior written consent. We and the third party have exclusive rights over copyrighted material. No license shall be granted or conveyed under any patents, copyrights, trademarks, or service mark rights. To avoid ambiguities, purchasing in any form cannot be deemed as granting a license other than the normal non-exclusive, royalty-free license to use the material. We reserve the right to take legal action for noncompliance with abovementioned requirements, unauthorized use, or other illegal or malicious use of the material.

Trademarks

Except as otherwise set forth herein, nothing in this document shall be construed as conferring any rights to use any trademark, trade name or name, abbreviation, or counterfeit product thereof owned by Quectel or any third party in advertising, publicity, or other aspects.

Third-Party Rights

This document may refer to hardware, software and/or documentation owned by one or more third parties ("third-party materials"). Use of such third-party materials shall be governed by all restrictions and obligations applicable thereto.

We make no warranty or representation, either express or implied, regarding the third-party materials, including but not limited to any implied or statutory, warranties of merchantability or fitness for a particular purpose, quiet enjoyment, system integration, information accuracy, and non-infringement of any third-party intellectual property rights with regard to the licensed technology or use thereof. Nothing herein constitutes a representation or warranty by us to either develop, enhance, modify, distribute, market, sell, offer for sale, or otherwise maintain production of any our products or any other hardware, software, device, tool, information, or product. We moreover disclaim any and all warranties arising from the course of dealing or usage of trade.

Privacy Policy

To implement module functionality, certain device data are uploaded to Quectel's or third-party's servers, including carriers, chipset suppliers or customer-designated servers. Quectel, strictly abiding by the relevant laws and regulations, shall retain, use, disclose or otherwise process relevant data for the purpose of performing the service only or as permitted by applicable laws. Before data interaction with third parties, please be informed of their privacy and data security policy.

Disclaimer

- a) We acknowledge no liability for any injury or damage arising from the reliance upon the information.
- b) We shall bear no liability resulting from any inaccuracies or omissions, or from the use of the information contained herein.
- c) While we have made every effort to ensure that the functions and features under development are free from errors, it is possible that they could contain errors, inaccuracies, and omissions. Unless otherwise provided by valid agreement, we make no warranties of any kind, either implied or express, and exclude all liability for any loss or damage suffered in connection with the use of features and functions under development, to the maximum extent permitted by law, regardless of whether such loss or damage may have been foreseeable.
- d) We are not responsible for the accessibility, safety, accuracy, availability, legality, or completeness of information, advertising, commercial offers, products, services, and materials on third-party websites and third-party resources.

Copyright © Quectel Wireless Solutions Co., Ltd. 2024. All rights reserved.

About the Document

Revision History

Version	Date	Author	Description
1.0	2017-11-14	Hunter LV/ Joy WANG	Initial
2.0	2018-12-24	Isaac WANG	<ol style="list-style-type: none">1. Added the applicable modules EM06, EM12, EG12 of this document.2. Modified some screenshots of driver installation. (Figure 1, 4, 7, 9, 10, 16)
2.1	2019-07-08	Isaac WANG	<ol style="list-style-type: none">1. Added applicable modules EM05, EG18, EM20, BG95, AG35, AG15, AG520R, RG500Q of this document. Please refer to Table 2 for details.2. Updated all the screenshots of USB driver installation and uninstallation except Figure 8. (Chapter 2 and 3).
2.2	2022-05-10	Bruce LI	<ol style="list-style-type: none">1. Updated the driver name.2. Updated the Windows operating system supported by the provided installation package (Chapter 1).3. Added applicable modules RG525F-NA, RG500Q series, RG501Q-EU, RG502Q series, RG520F series, RG520N series, RG530F series, RM500Q series, RM502Q-AE, RM505Q-AE, RM510Q-GL, RM520N-GL and RM530N-GL and deleted EC20 R2.0 and EM20 (Chapter 1.1).4. Updated the test tool from QNavigator to QCOM (Chapter 2.3).
2.3	2023-07-25	Bruce LI	<ol style="list-style-type: none">1. Deleted AG520R series (Chapter 1.1).2. Updated the driver version in the example to Quectel_Windows_USB_Driver(Q)_NDIS_V2.3 (Chapter 2.2).
2.4	2024-04-30	Bruce LI	<ol style="list-style-type: none">1. Added applicable modules EG21-G, EG21-GL, EG25-G, EG25-GL, EG120K series, EG060K series, EM060K series, EM120K-GL, EM120R-GL,

EM121R-GL, EM160R-GL, RG255C series, RM255C-GL and RM521F-GL.

2. Deleted BG95 series and AG15 according to Quectel's product marketing strategies.
 3. Updated the driver version in the example to Quectel_Windows_USB_Driver(Q)_NDIS_V2.7 (Chapter 2.2).
-

Contents

About the Document.....	3
Contents	5
Table Index	6
Figure Index	7
1 Introduction	8
1.1. Applicable Modules	8
2 Installation of USB NDIS Driver.....	9
2.1. Preparation.....	9
2.2. Installation Procedures	10
2.3. Check Installation Result	14
2.4. Test.....	15
3 Uninstallation of USB NDIS Driver	16
3.1. Uninstallation Procedures	16
4 Appendix References	20

Table Index

Table 1: Applicable Modules.....	8
Table 2: Related Document.....	20
Table 3: Terms and Abbreviations	20

Figure Index

Figure 1: "Device Manager" Interface of Windows System Without Quectel USB Driver Installed	10
Figure 2: Preparing to Install	11
Figure 3: Choose Destination Location	12
Figure 4: Default Destination Location	12
Figure 5: Copy Files	13
Figure 6: Automatic Installation	13
Figure 7: Complete Installation	14
Figure 8: "Device Manager" Interface with Driver Successfully Installed	14
Figure 9: Test Module via QCOM (Take RG500Q-EU as an Example)	15
Figure 10: Uninstall USB NDIS Driver	16
Figure 11: Check Uninstallation Setting	17
Figure 12: Confirm Uninstallation	17
Figure 13: Automatic Uninstallation	17
Figure 14: Remove Installation Files	18
Figure 15: Complete Uninstallation	18
Figure 16: Check USB NDIS Driver Uninstallation Result	19

1 Introduction

Quectel provides a USB NDIS driver installation package (*Quectel_Windows_USB_Driver(Q)_NDIS*), which supports Windows 8.1/10/11 operating systems. This document takes the Windows 10 system as an example to introduce how to install and uninstall the USB NDIS driver for Quectel modules on Windows operating systems.

1.1. Applicable Modules

Table 1: Applicable Modules

Product Line	Module
LTE Standard	EC20-CE, EC21 Series, EC25 Series, EG21-G, EG21-GL, EG25-G, EG25-GL, EG91 Series, EG95 Series, EM05 Series
LTE-A	EG06 Series, EG060K Series, EG12 Series, EG120K Series, EG18 Series, EM06 Series, EM060K Series, EM12-G, EM120K-GL, EM120R-GL, EM121R-GL, EM160R-GL, EP06 Series
LPWA	BG96
Automotive	AG35 Series
5G	RG255C Series, RG500Q Series, RG501Q-EU, RG502Q Series, RG520F Series, RG520N Series, RG525F-NA, RG530F Series, RM255C-GL, RM500Q Series, RM502Q-AE, RM505Q-AE, RM510Q-GL, RM520N-GL, RM521F-GL, RM530N-GL

2 Installation of USB NDIS Driver

This chapter describes how to install a USB NDIS driver for Quectel modules with the provided installation package.

2.1. Preparation

Please complete the following preparations before installation.

Step 1: Obtain the latest installation package from Quectel Technical Support.

Step 2: Connect the device or EVB equipped with the module to the PC through a USB cable.

Step 3: Power on the module.

If you have never installed any Quectel USB driver on your system before, there will be a prompt indicating that the drivers of the new devices need to be updated. Please ignore the prompt and begin to install the USB NDIS driver according to the procedures in **Chapter 2.2**.

The figure below shows the “Device Manager” interface of the Windows system on which Quectel drivers have never been installed.

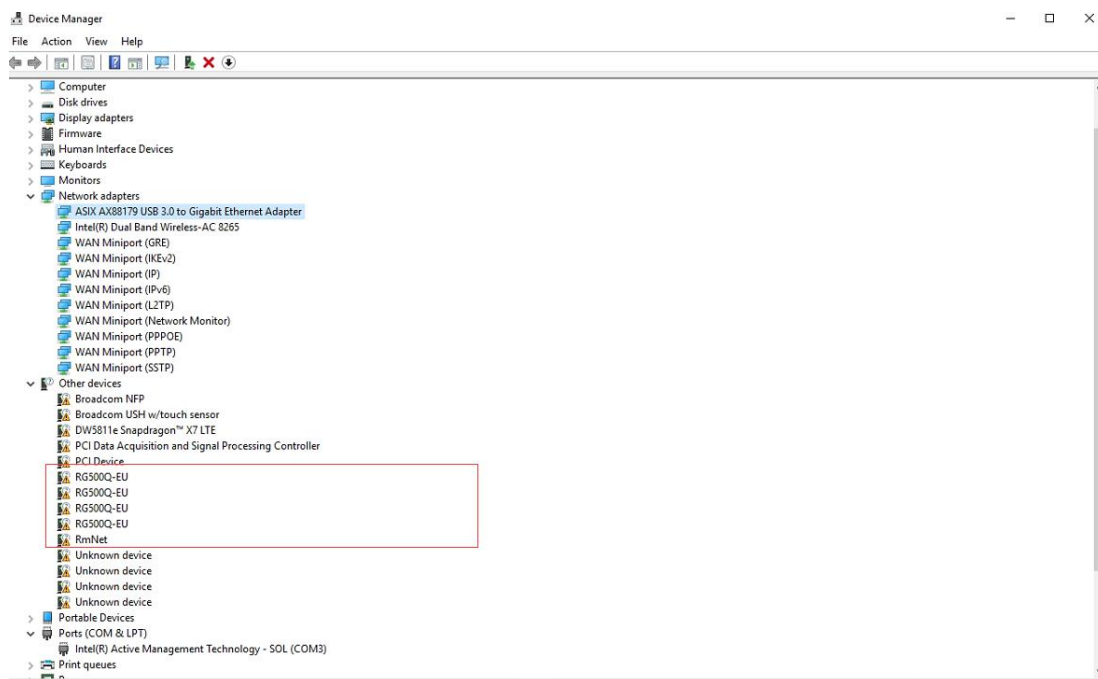


Figure 1: "Device Manager" Interface of Windows System Without Quectel USB Driver Installed

2.2. Installation Procedures

This chapter takes the installation of *Quectel_Windows_USB_Driver(Q)_NDIS_V2.3* as an example, and the detailed procedures are as below.

Step 1: Check Installation Setting

Double click the *setup.exe* in the installation package to enter the "Preparing to Install" interface as below:

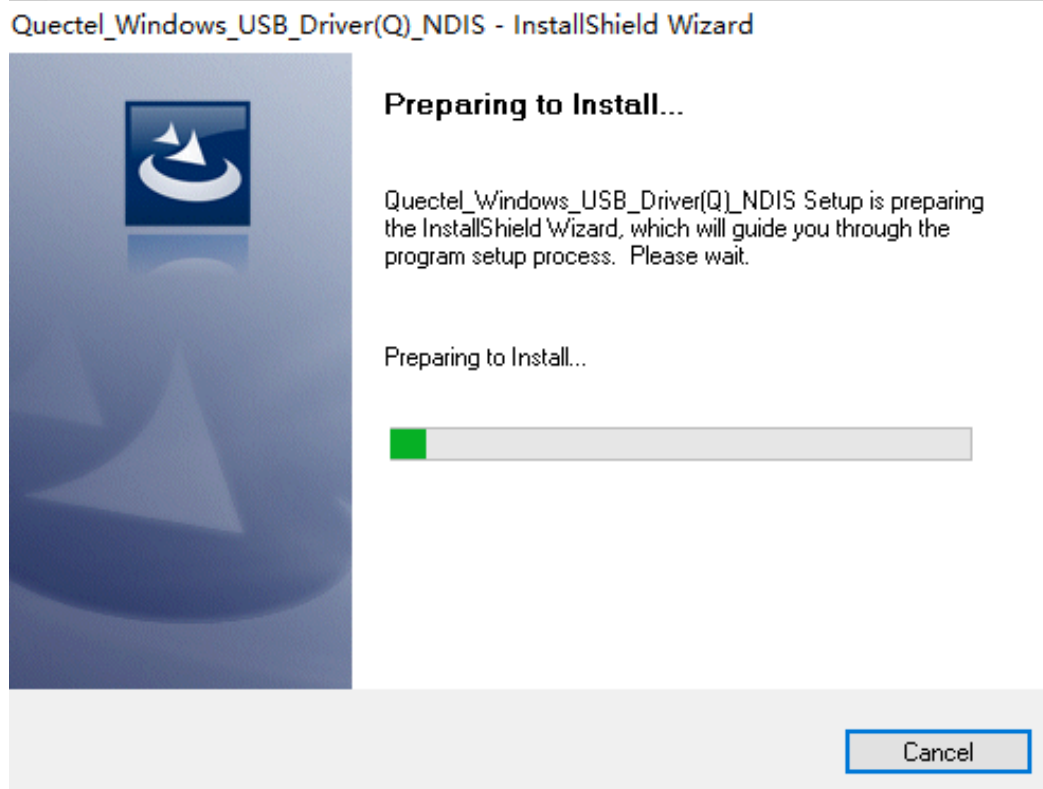


Figure 2: Preparing to Install

After the InstallShield Wizard is ready, the "Choose Destination Location" interface will pop up.

Step 2: Choose Destination Location

If you want to change the location for USB NDIS driver installation, click "**Browse...**" to enter the "Choose Folder" interface. You can select the destination location and then click "**OK**" to save the configuration. The interface returns to the "Choose Destination Location" interface and you can click "**Next >**" to continue the installation.

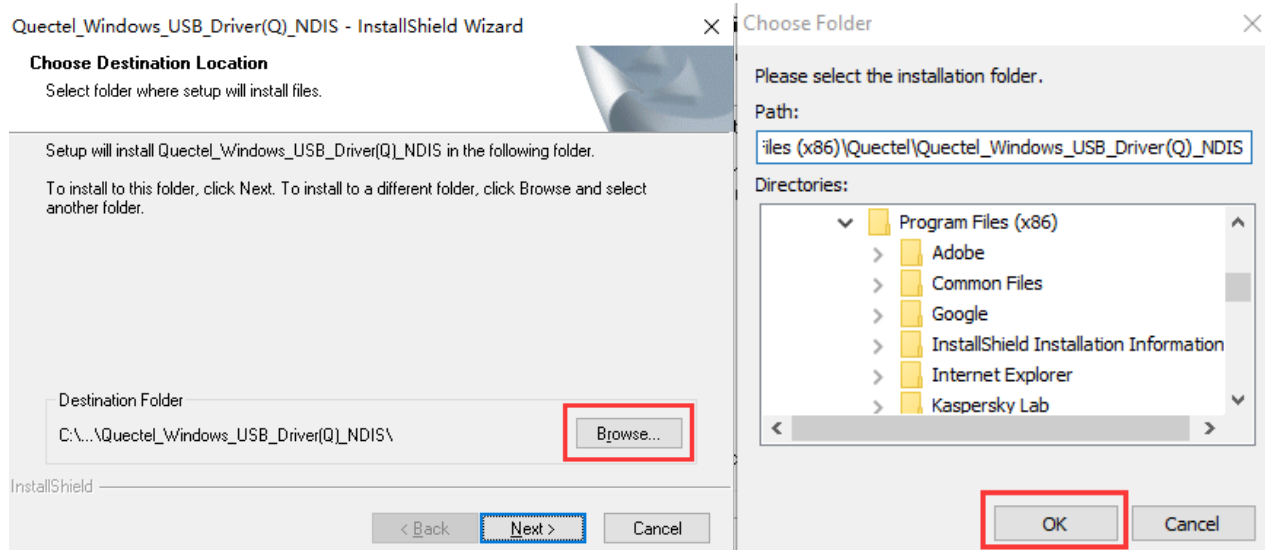


Figure 3: Choose Destination Location

If you choose the default location for USB NDIS driver installation, you can click "**Next >**" directly to continue the installation.

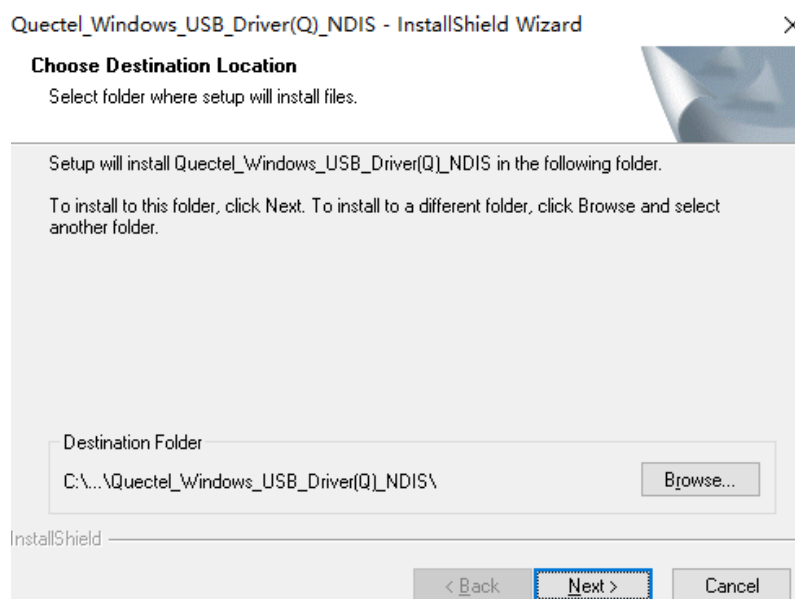


Figure 4: Default Destination Location

Step 3: Copy Driver Files Needed for Installation

When the following interface is displayed, please click "**Next >**" to begin copying files.

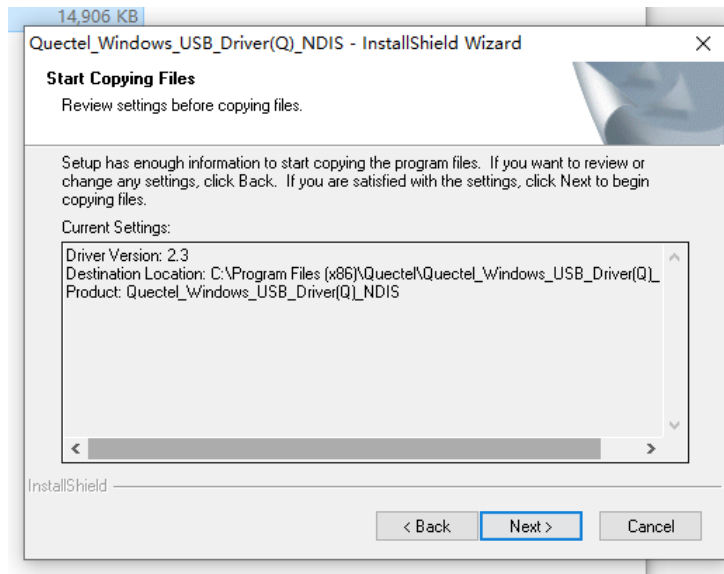


Figure 5: Copy Files

Step 4: Automatic Installation

Driver installation automatically starts after file copying completes. It may take some time to install the USB NDIS driver, please wait patiently for the process to complete.

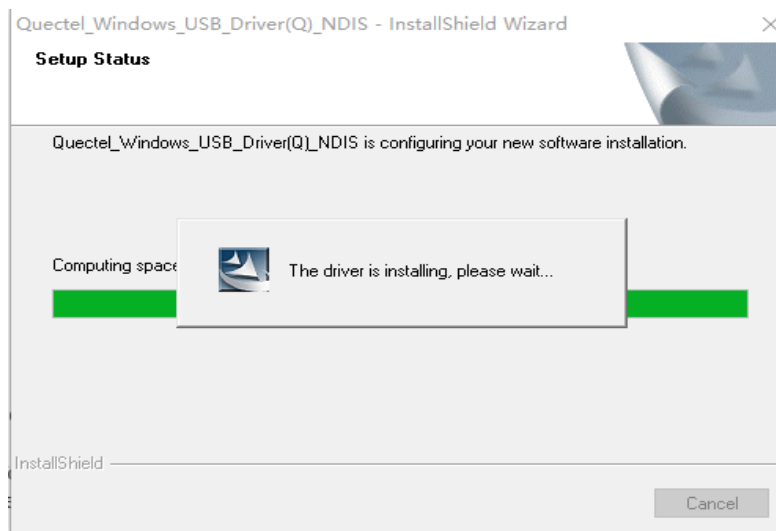


Figure 6: Automatic Installation

Step 5: Complete Installation

When the following interface is displayed, it indicates a successful driver installation. Click **"Finish"** to complete the installation.

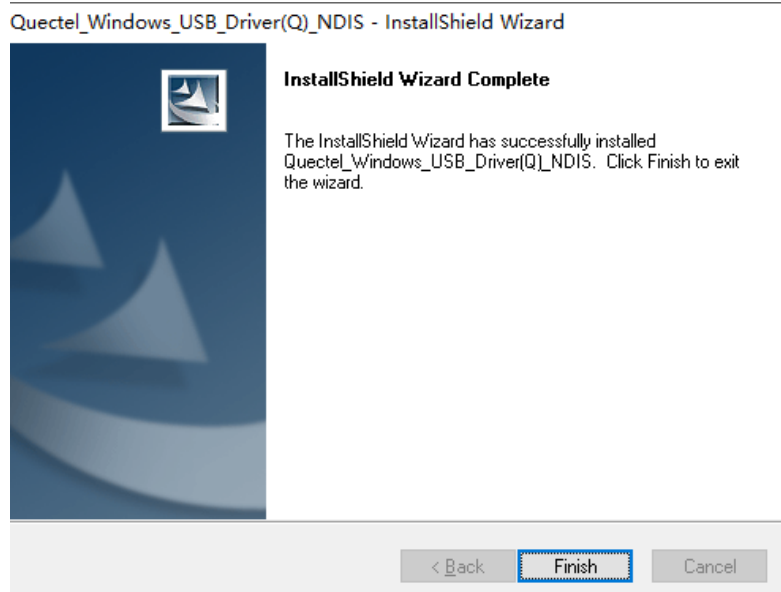


Figure 7: Complete Installation

2.3. Check Installation Result

You can check the installation result through "Computer Management" → "Device Manager". The "Device Manager" interface after a successful driver installation is shown below.

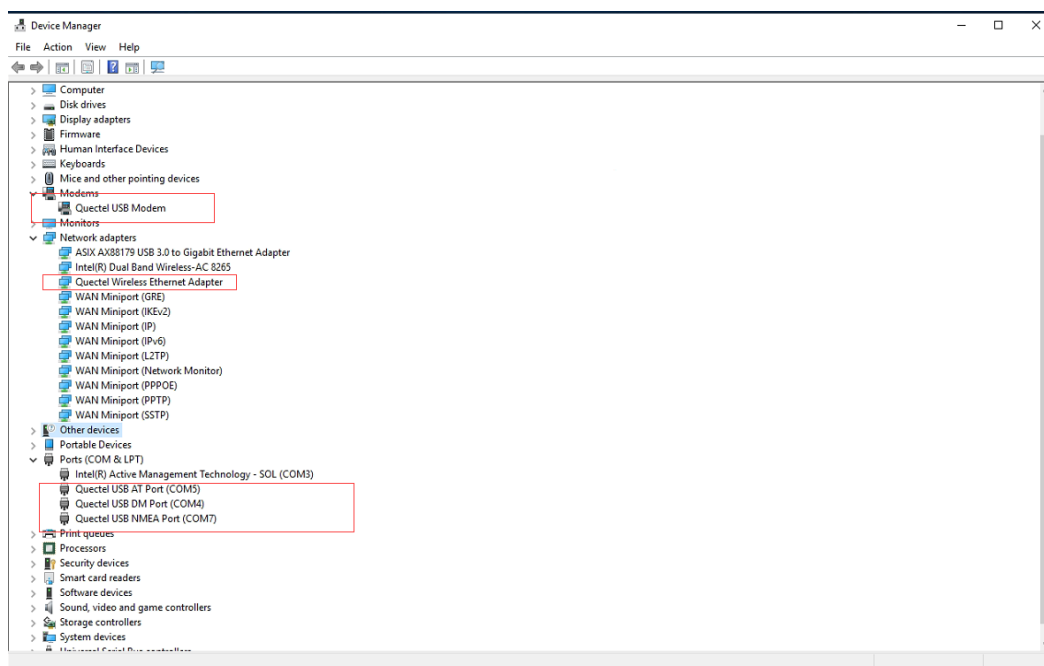


Figure 8: "Device Manager" Interface with Driver Successfully Installed

2.4. Test

After the USB NDIS driver has been installed, you can test whether the driver works normally via QCOM. For detailed steps, see [document \[1\]](#). For details of QCOM, contact Quectel Technical Support.

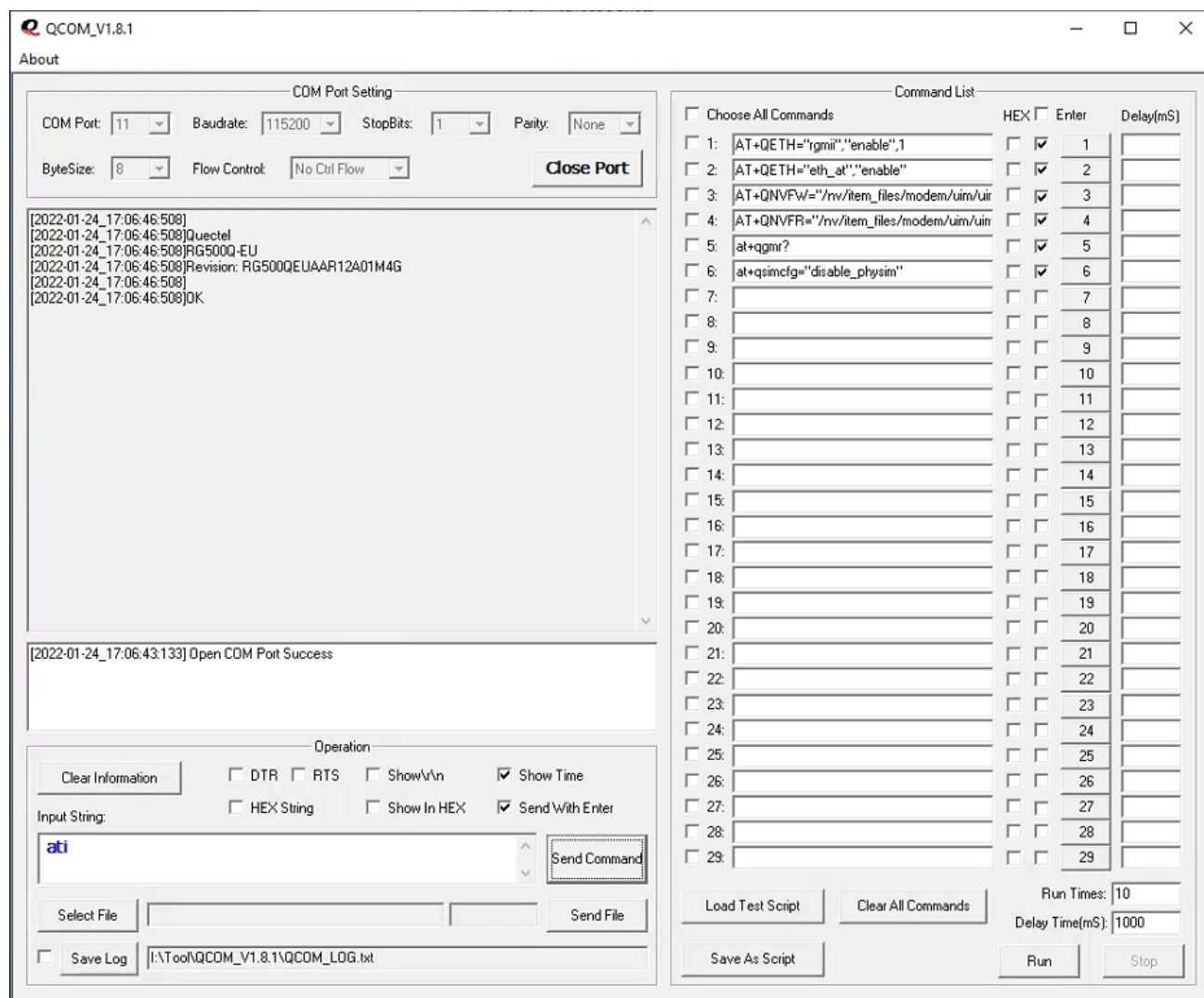


Figure 9: Test Module via QCOM (Take RG500Q-EU as an Example)

3 Uninstallation of USB NDIS Driver

The uninstallation can be realized by re-operating the installation package or adding/deleting the program on the "Control Panel". This chapter introduces how to uninstall the USB NDIS driver by adding/deleting the program on the "Control Panel".

3.1. Uninstallation Procedures

Step 1: Select Driver

Open the "Control Panel", click to enter "Uninstall or change a program" and select the installed NDIS driver, right click and select "**Uninstall**", as shown in the figure below.

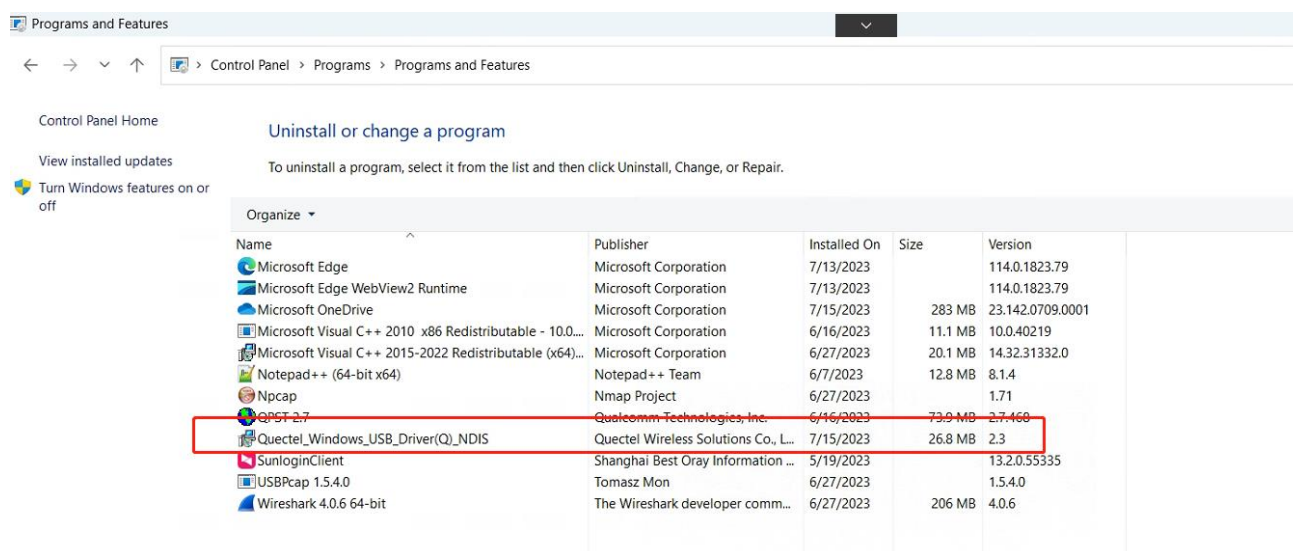


Figure 10: Uninstall USB NDIS Driver

Step 2: Check Uninstallation Setting

After choosing the installed driver for uninstallation, the system will check the uninstallation setting, as shown in the following figure.

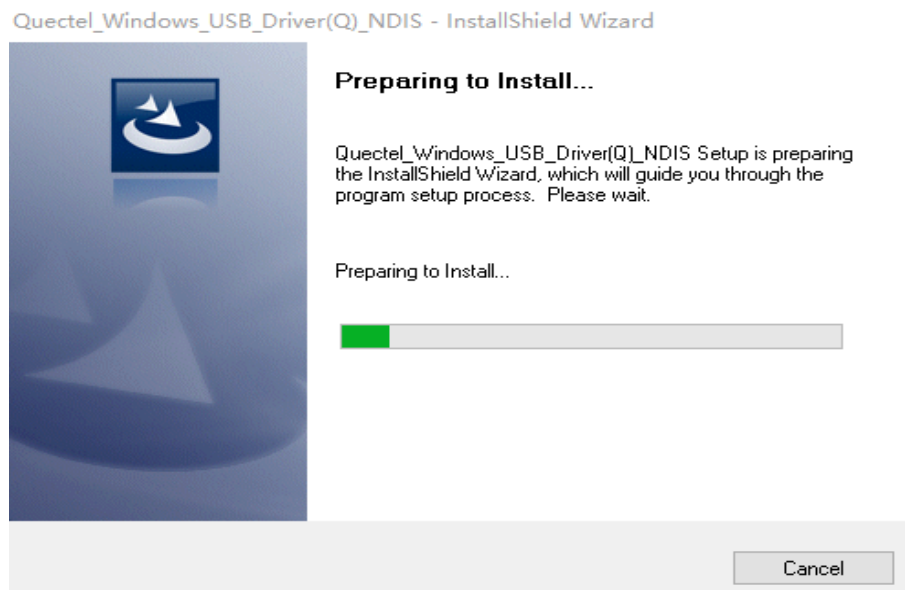


Figure 11: Check Uninstallation Setting

Step 3: Confirm Uninstallation

Click **"Yes"** to confirm the uninstallation.

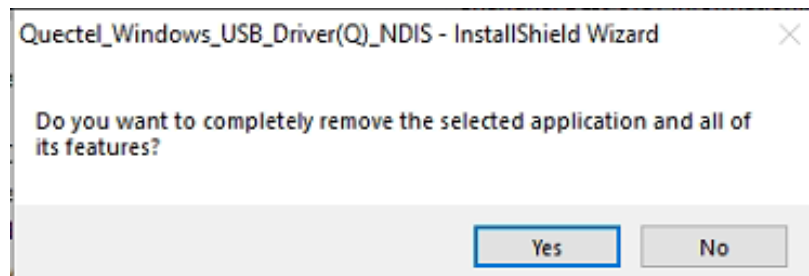


Figure 12: Confirm Uninstallation

Step 4: Automatic Uninstallation

Driver uninstallation automatically starts after you confirm the uninstallation.

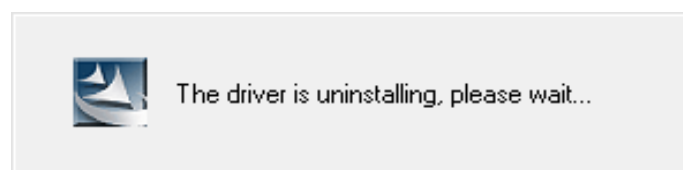


Figure 13: Automatic Uninstallation

The interface below indicates that InstallShield Wizard is removing installation files. It may take some time to uninstall the driver, please wait patiently for the process to complete.

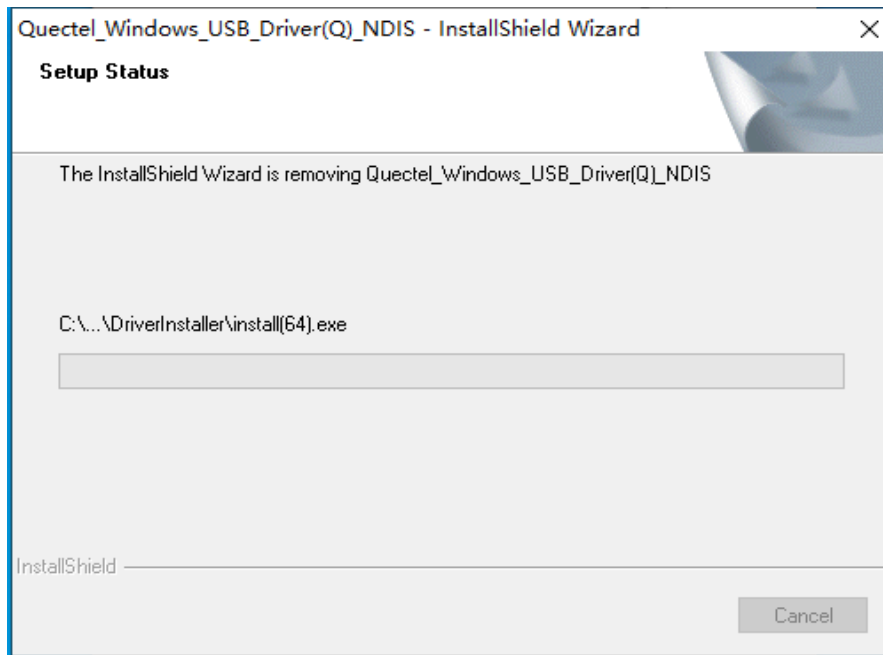


Figure 14: Remove Installation Files

Step 5: Complete Uninstallation

When the following interface is displayed, it indicates the driver has been uninstalled successfully. Click **"Finish"** to complete uninstallation.

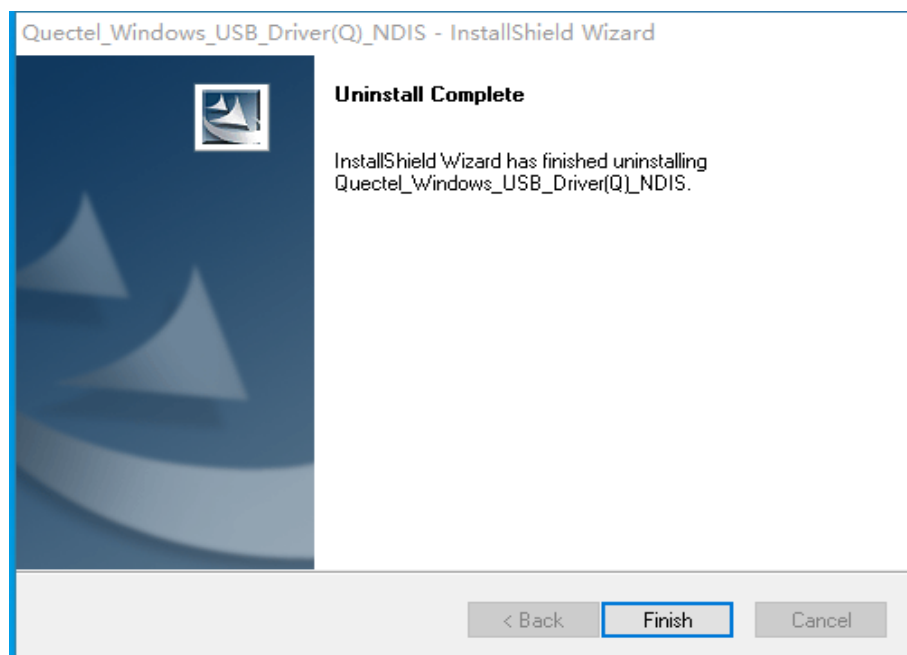


Figure 15: Complete Uninstallation

Step 6: Check Uninstallation Result

After the USB NDIS driver has been uninstalled successfully, the device will switch to uninstalled status. You can check whether the driver has been uninstalled successfully or not through "Computer Management" → "Device Manager". The "Device Manager" interface after a successful driver uninstallation is shown below.

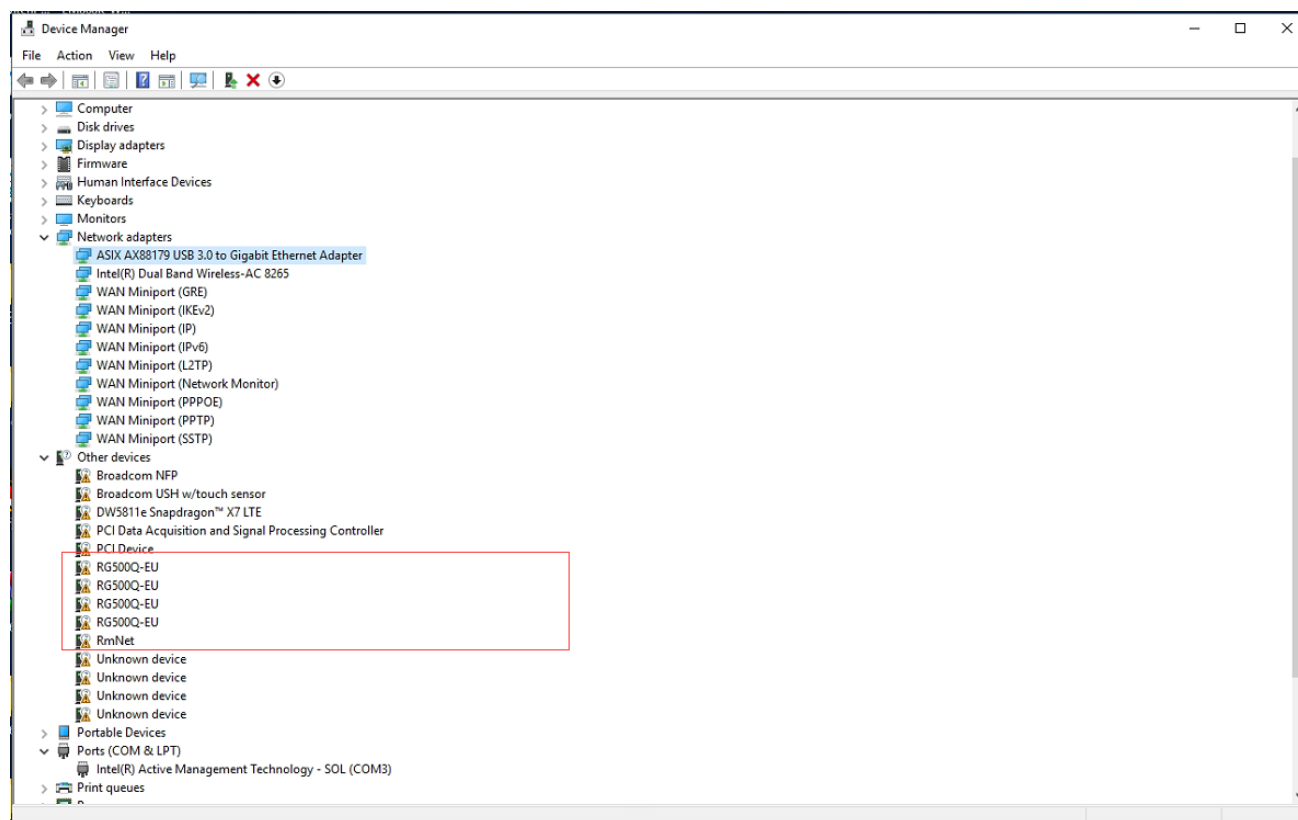


Figure 16: Check USB NDIS Driver Uninstallation Result

4 Appendix References

Table 2: Related Document

Document Name
[1] Quectel_QCOM_User_Guide

Table 3: Terms and Abbreviations

Abbreviation	Description
5G	5th-Generation
LPWA	Low-Power Wide-Area (Network)
LTE	Long-Term Evolution
LTE-A	LTE-Advanced
NDIS	Network Driver Interface Specification
PC	Personal Computer
USB	Universal Serial Bus